









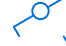






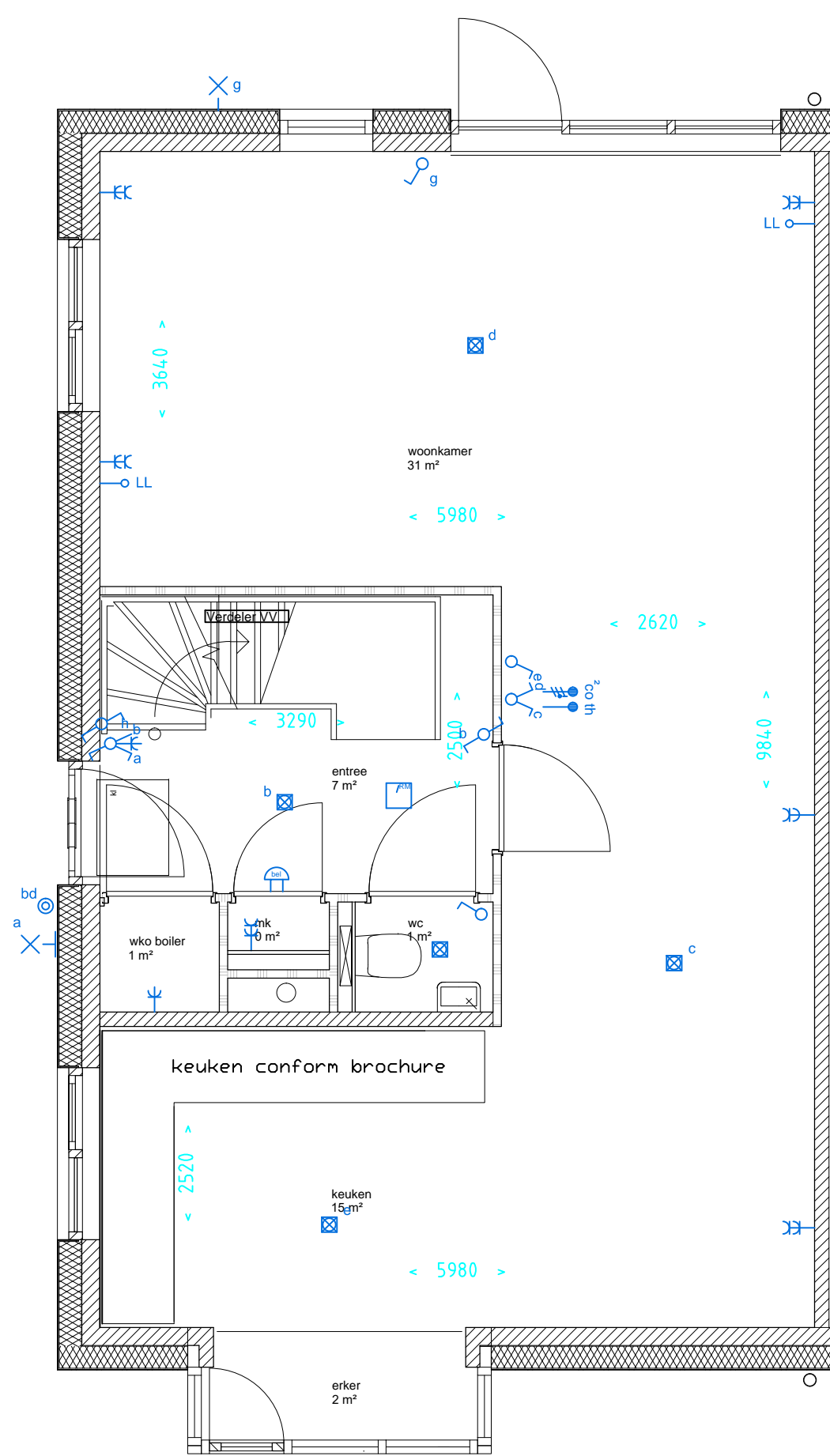
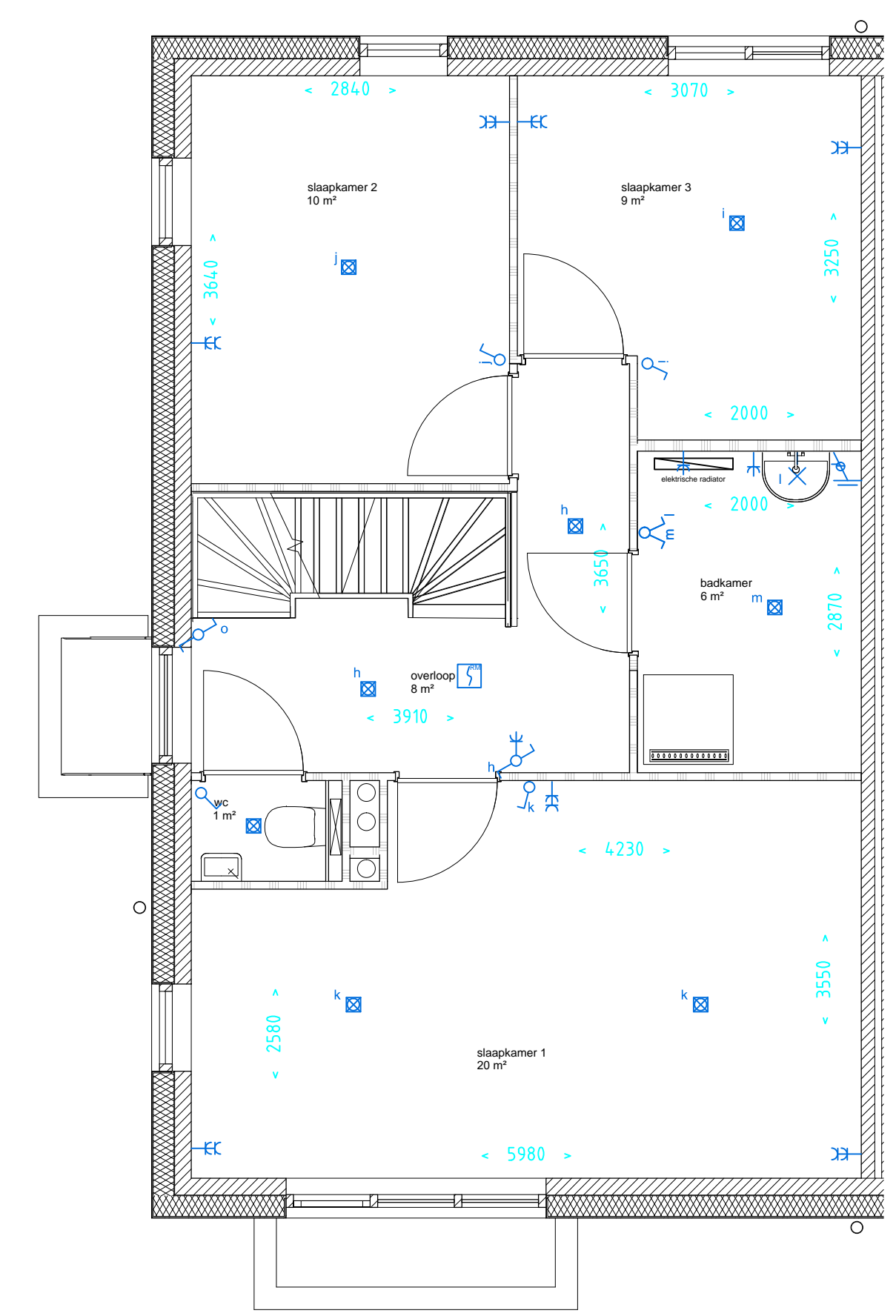


**ALGEMEEN RENVOOI:**

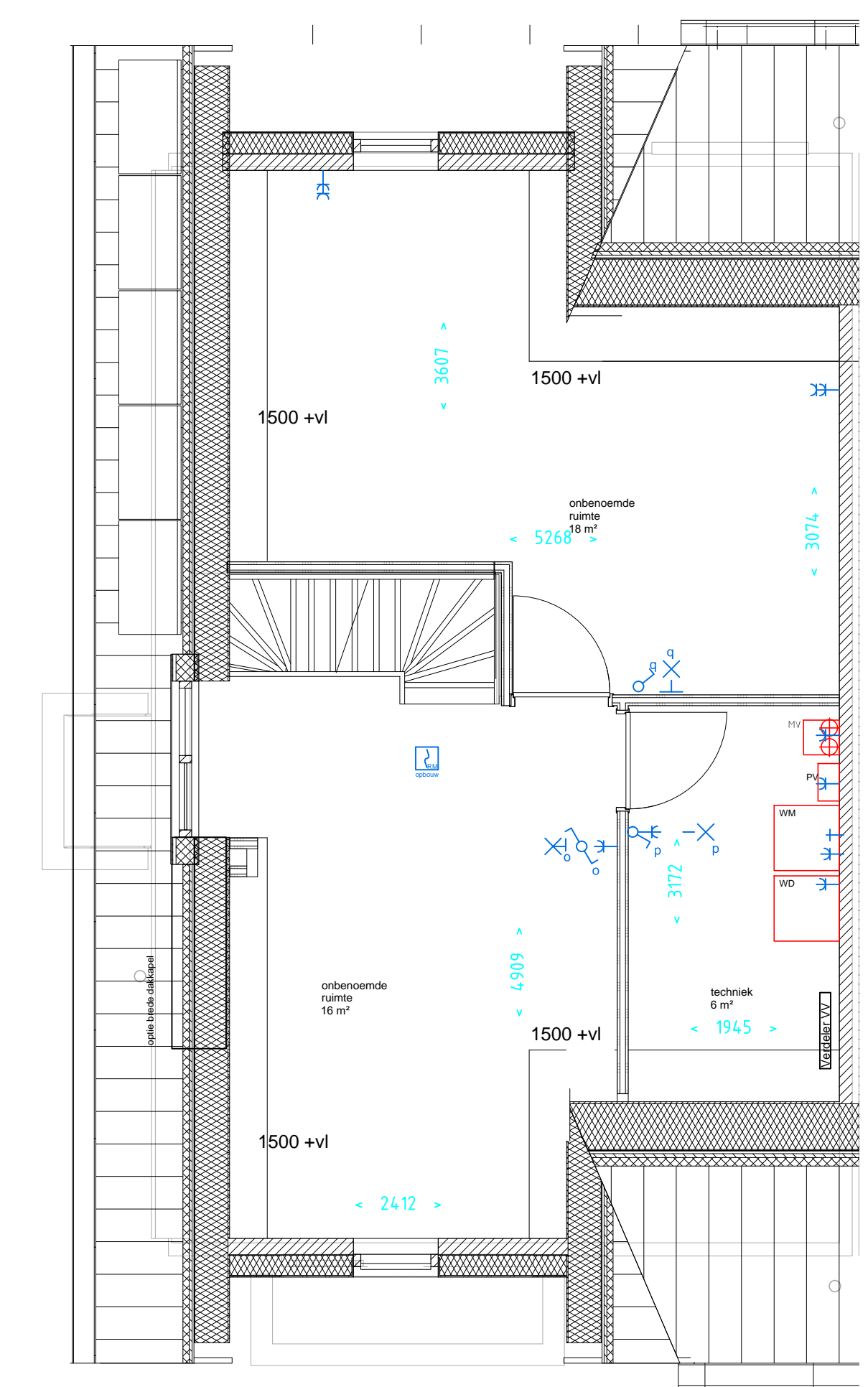
-  isolatiemateriaal
-  kalkzandsteen
-  GIBO / lichte scheidingswand
-  metalstudwand
-  wm opstelplaats wasmachine
-  wd opstelplaats wasdroger
-  mv aansl.punt mech. ventilatie
-  wko warmte- en koudeopslagunit
-  enkele lichtschakelaar
-  dubbele lichtschakelaar
-  wissel schakelaar
-  enkele lichtschakelaar + elektr
-  dubbele wandcontactdoos
-  lichtpunt aan wand
-  lichtpunt aan plafond
-  loze leiding in wand
-  deurbel



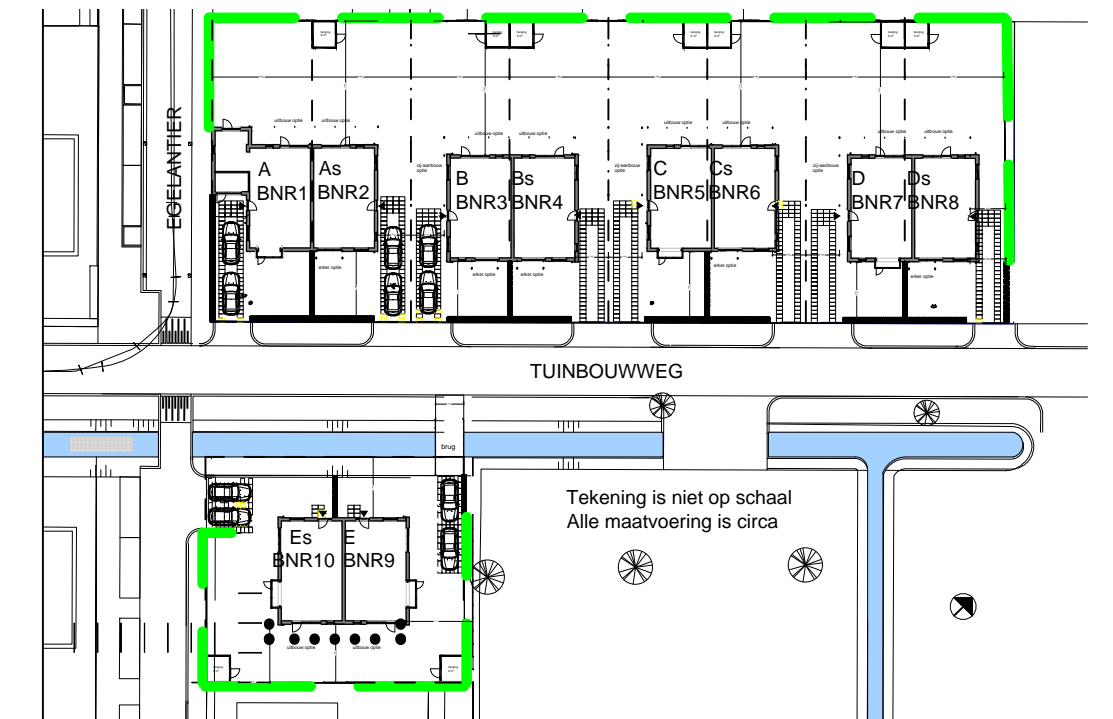
Begane Grond (1:50)



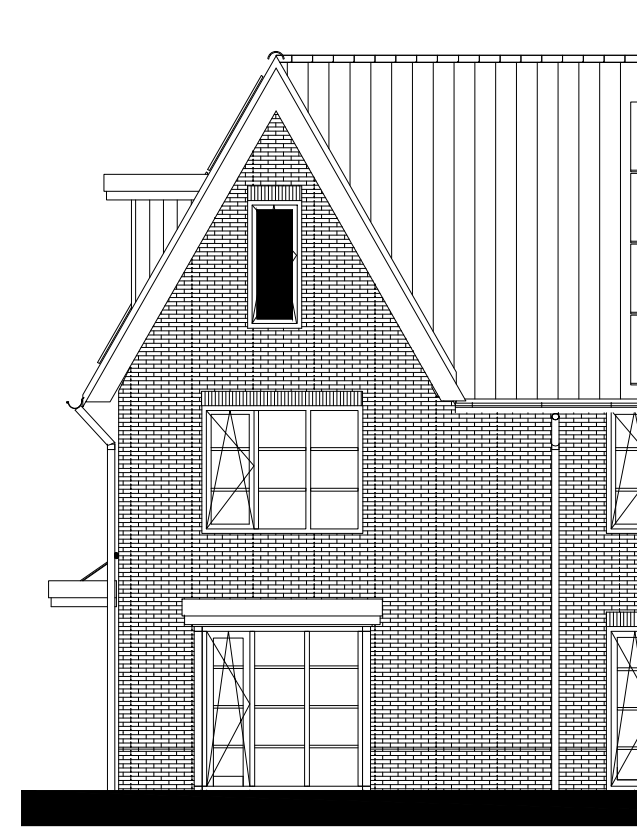
1e verdieping (1:50)



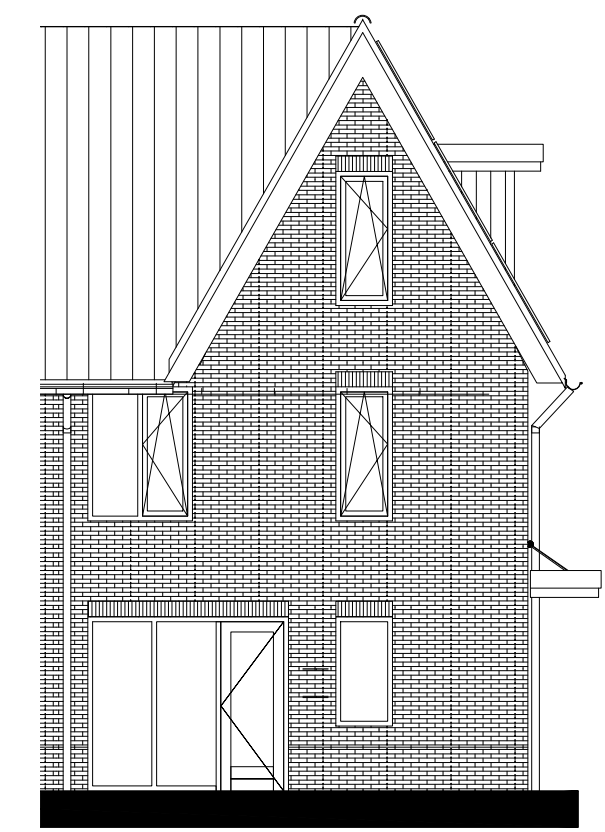
2e verdieping (1:50)



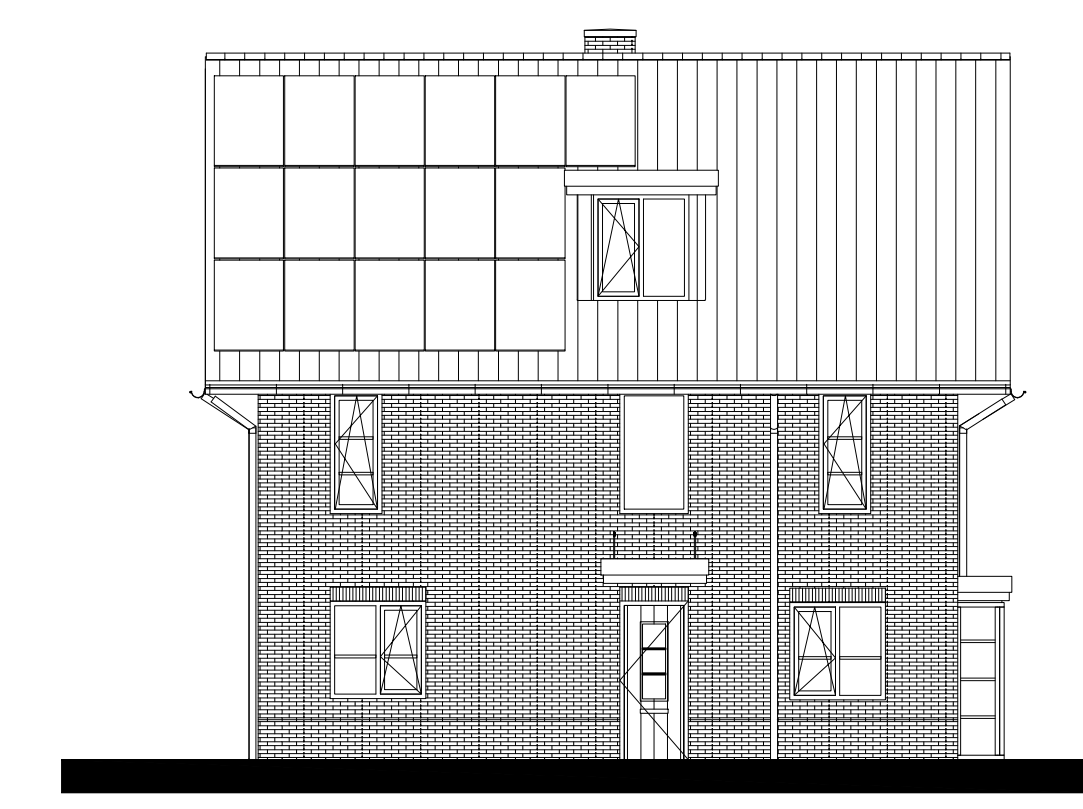
Situatie (1:750)



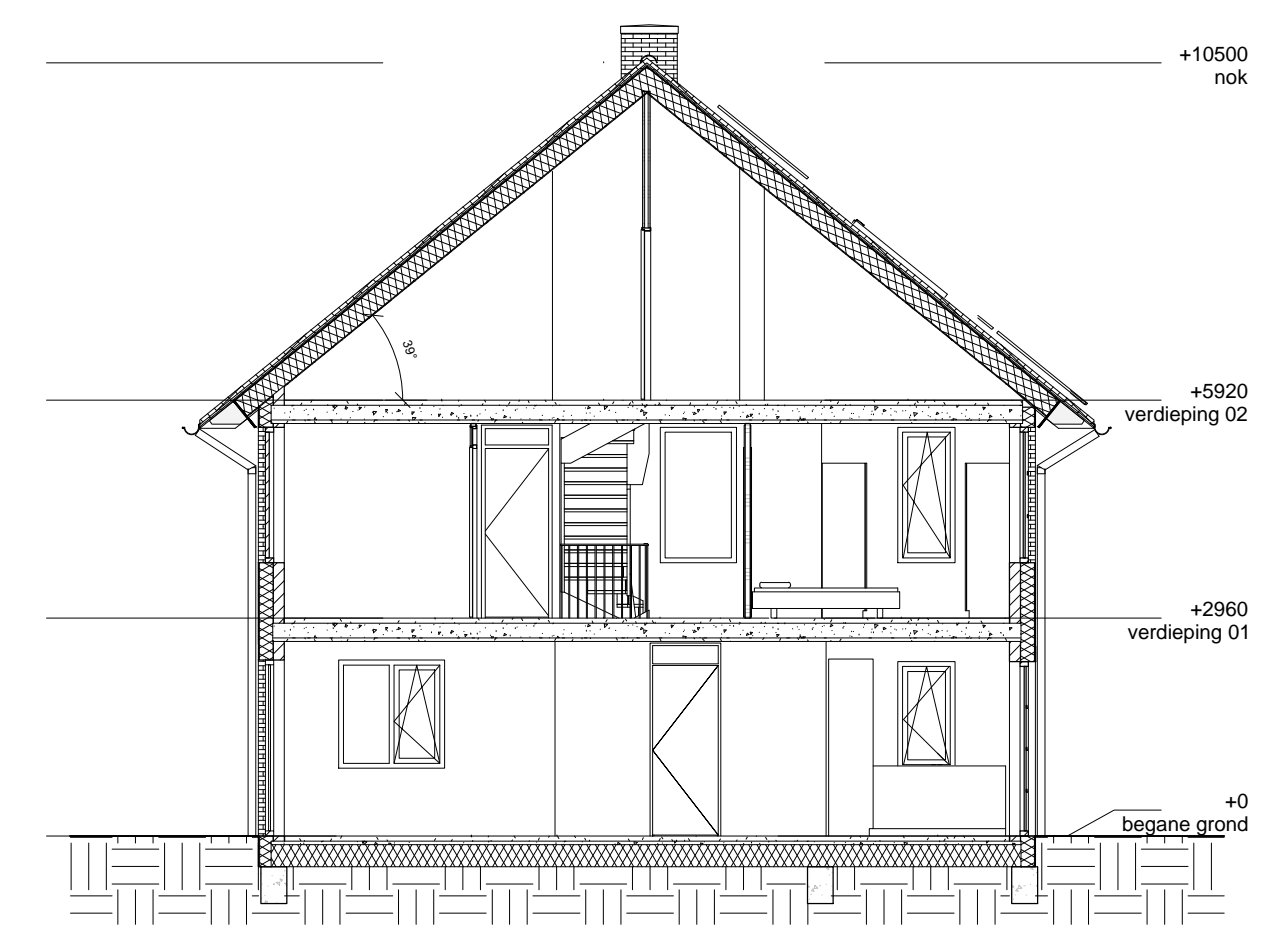
Voorgevel (1:100)



Achtergevel (1:100)



Zijgevel (1:100)



Doorsnede (1:100)



Project: Het Groene Lint - 10 woningen te Waddinxveen			Opdrachtgever:
Onderwerp: Verkooptekening Type C bouwnummer 5	Projectnummer: 18.100.250		
Tekenaar: RDEROO	Datum: 29-08-2018	Gewijzigd:	
Formaat: A1	Schaal: Variabel	Status: Voorlopig	Teknr.: C-1