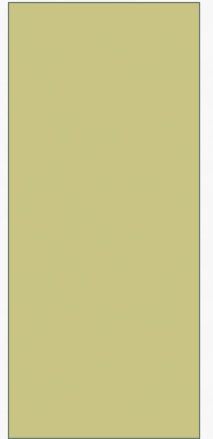


# OPERATIONS PORTFOLIO REPORT

5 APRIL 2014



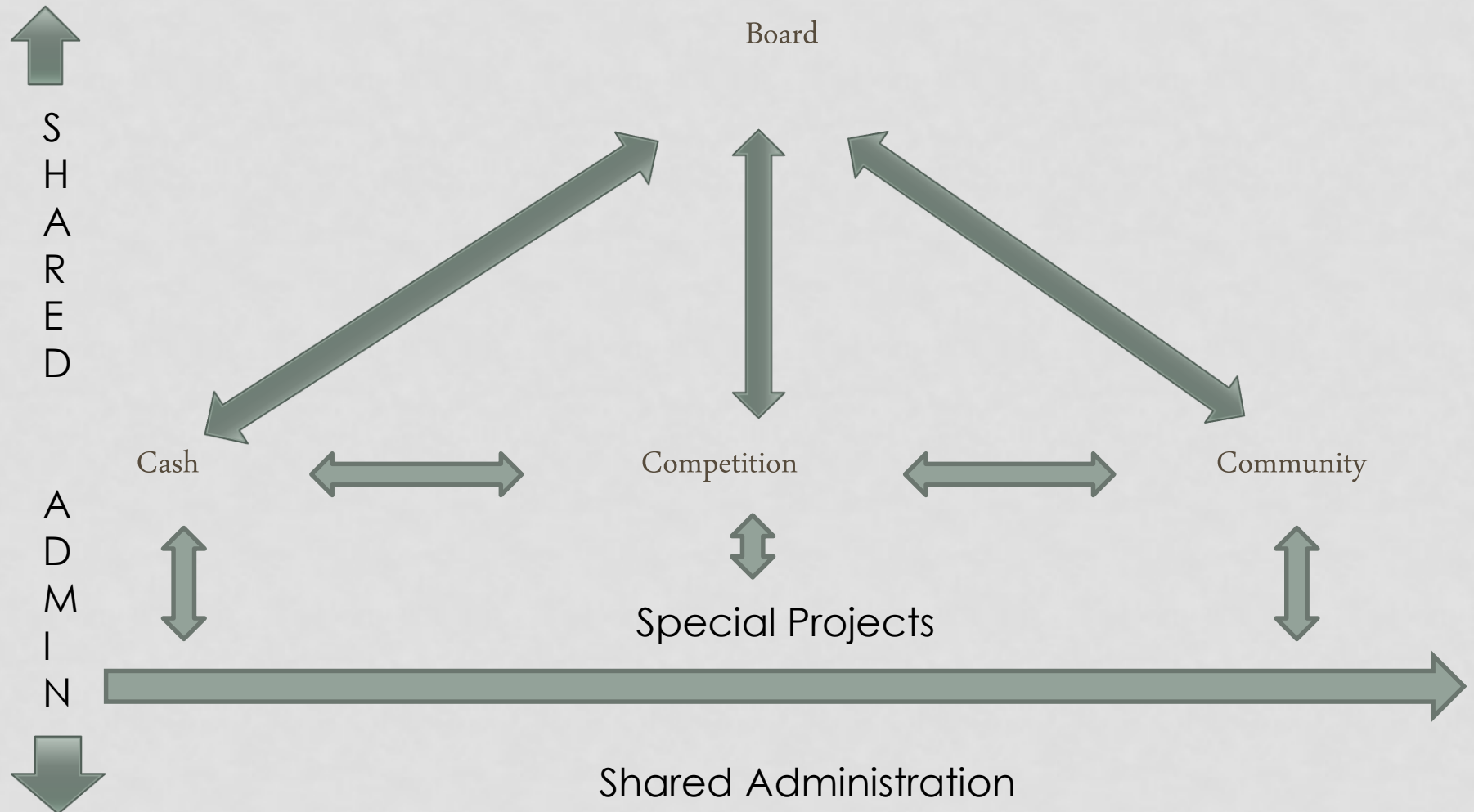
# WHERE ARE WE:

- Received approval in principle from all Regions with the assistance of Regional Chairs – Thank you.
- Some detailed questions have been asked along the way, some we have answered at a principle level, others we are now in a position to answer.
- Working to develop structure sought by the community
- Establish a process guide for each role
- Establish Working relationships
- Establish contact with people in our community who have expressed an interest in supporting this proposed structure.

# WHY ARE WE DOING THIS

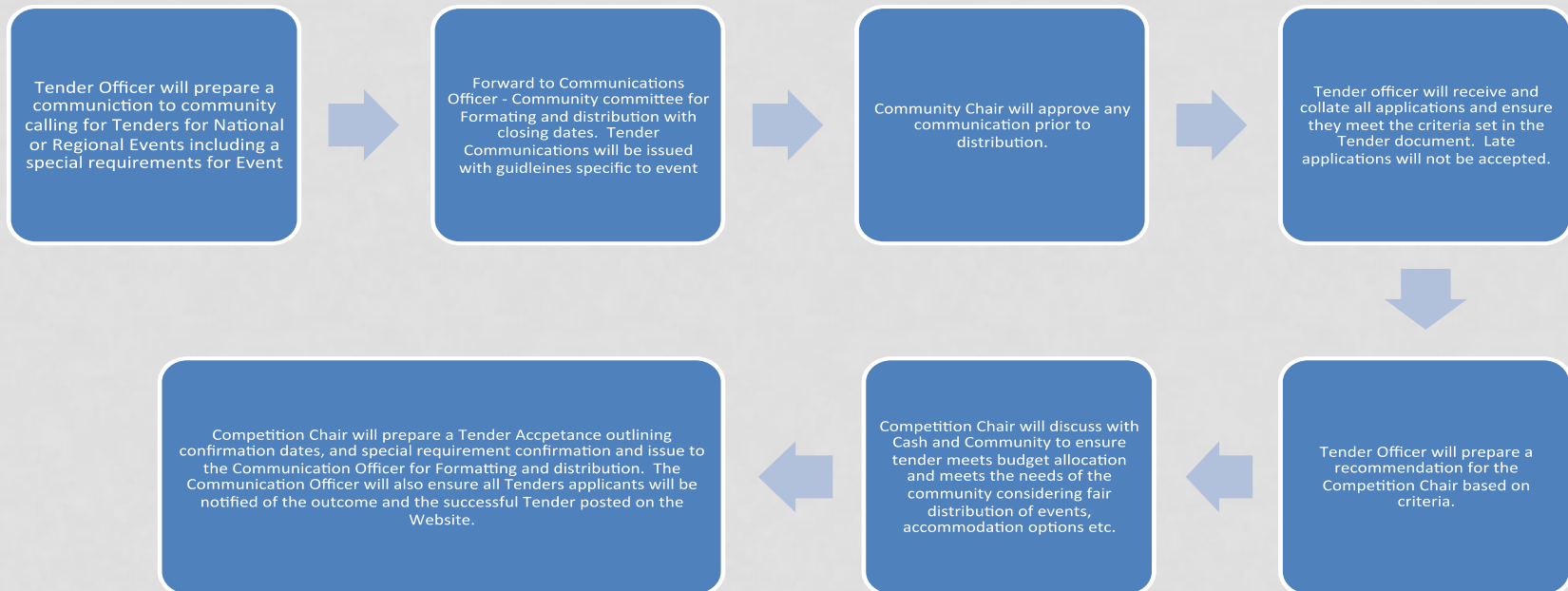
- We have an obligation to our members and our stakeholders to deliver an efficiently run sport.
- There are opportunities for our sport to grow through a wider engagement of our community.
- This is OUR sport, and OUR responsibility to contribute, to help and to build healthy and cohesive relationships between NZIHA and Clubs
- Regions are currently ineffective, roles are unknown, ineffective or confused, clubs lack ownership.
- A wealth of knowledge exists with the Region Chairs, this brings all of that experience together in one potentially highly effective Operational unit.

# WHAT ARE WE DOING ..... STRUCTURE



# HOW ARE WE GOING TO MANAGE

## NZIHA Process Guide Tender Application



# WHAT DOES COMPETITION LOOK LIKE

- Chair (discipline Chair)
- Sanctioning
- Tender
- Event Notice
- Coach and Selector
- Training Coordinator
- Uniform
- Grass Roots Development

- Improve transparency on decision made by sharing them with community
- Be accountable for those decisions
- Create procedures and process (systems) in place

### WAIVER REQUEST REGISTER

Date	Name	Grade	Reason	Date Sent Competition Committee	Date Sent to Community Committee	Date Published to Web	Outcome	Club Affiliation
			Exam	Before	Before Trial	Before Trial	Accept	
			Doctor Cert	Trial			or	
			Employer Letter				Decline	
			Financial Constraints					

### PLAYER TRAVEL INFORMATION

Uniform Pants Est Cost \$60	Pant Size	Uniform Jersey Est Cost \$60.00	Jersey Size	First Choice Number	Second Choice Number	Third Choice Number	Polo	Size

# WHAT DOES CASH LOOK LIKE

- Cash Committee Chair
  - Budget
  - Grants
  - Fundraising
  - Accounts
  - Regional Events Financial
- 
- NZIHA typically applies for 2-3 grants a year with the support of a grants officer we can be applying for multiple grants throughout the year to support the sport



# WHAT DOES COMMUNITY LOOK LIKE

- Community Chair (Stakeholder Engagement)
- Registration and Membership
- Communications
- Survey and Feedback
- Sponsorship
- Brand, Marketing and Promotions
- Media
- Complaints
- Policy Development

- Register once and opt out if not playing following season
- Collect Schools participation
- Collect Volunteer information
- Automatic billing of annual subscription fee
- Register NZIHA push down to Clubs
- We would like players to register once with NZIHA and not have to re-supply the same information each

PLAYER AVAILABILITY FORM								
NZIHA Registration	Club Regionals	Nationals in New Plymouth 2014	Inter-Regionals in Auckland 2014	Oceania's in XX estimated cost \$3K in 2015	AAU In States estimated Cost 4K in 2015	FIRS in Europe estimated cost 5K 2015	Do you want to set up A/P for payments	Profesison
Move to one registration with annual invoicing rather than re-registering every year	NZIHA notifies Club			Players can budget may even set up A/P	Calendar in advance allows players to plan participation		Can look to payoff with weekly A/P	Understand what skills people have to support our sport

### SUPPORTING A VOLUNTEER SPORT

I am interested in assiting the sport through ...	Cash Committee	Community Committee	Competition Committee	Coaching	Interested in Learning Refereing	Referee Level 1	Referee Level 2	Referee Level 3

# SPECIAL PROJECTS

- *Special Projects are large one-offs*
- *Domestic Events (Established for each Event e.g. Nats/IRs)*
- *International Events (Established each event e.g. Oceania in NZ)*
- *Outside New Zealand Events (Established each event e.g. FIRS)*
- *Development Initiatives*
  
- *Potentially will utilise the expertise of Krys Beardman; and*
- *Call on resources from existing committee's;*
- *and additional volunteers dependent on initiative and skills required.*
  
- *NZIHA may look to outsource (or reorganise responsibility) for work in the future e.g. Travel could be outsourced or Team Manager function*

# WORKING RELATIONSHIPS

## Cash

Budget

Grants

Fundraising

Accounts

Regional  
Events  
Officer

## Competition

Sanctioning

Tender

Event

Coaching and  
Selector

Training  
Coordinator

Uniform

Grass Roots

## Community

Stakeholder

Registration and  
Membership

Communication

Survey/Feedback

Sponsorship

Brand and Marketing

Media

Complaints

Policy



# WHEN .....EXPRESSION OF INTEREST

## Cash

✓

Budget

Grants

Fundraising

Accounts

Regional  
Events  
Officer

## Competition

✓

Sanctioning

Tender

Event

Coaching and  
Selector

Training Coordinator

Uniform

Grass Roots

## Community

✓

Stakeholder

Registration and  
Membership

Communication

Survey/Feedback

Sponsorship

Brand and Marketing

Media

Complaints

Policy

NAME: \_\_\_\_\_ EMAIL: \_\_\_\_\_ PHONE: \_\_\_\_\_