

- **Video, control and power protection**
- **Video over IP protection**
- **Power over ethernet protection**
- **Indoor and outdoor cabinet applications**
- **Robust protection in a compact size**
- **Easily replaceable modules**
- **Ten year warranty**



**Video surveillance systems** are becoming one of the primary methods used in overall security protection in the industrial and process industries. In today's challenging times industrial and process facilities are identified as potential targets. These targets include water treatment facilities, petrochemical plants, oil refineries, oil and gas pipe lines, chemical plants, pharmaceutical plants, power plants and natural gas distributors.

**Today's sophisticated video surveillance** systems typically use analog based CCTV video with newer intelligent systems moving toward VoIP (video over IP) formats for networked video and digital recording.

**Because much of this equipment is located in exposed outdoor environments** or have interfaces connected to outdoor equipment, they require protection from electrical transients to function properly.

Lightning plays a large part in the risk to this equipment. Lightning induced transients as well as utility transients can render these systems inoperable. Protection from electrical transients at both the camera and video recording end will help keep these systems operating and reporting.

**MTL Surge Technologies** is one of the world's leading manufacturers of surge protection devices. We have been manufacturing surge protection devices for over 30 years. We have protection for today's most sophisticated surveillance systems. We protect video interfaces both analog and digital, POE (power over ethernet), PTZ (pan, tilt and zoom) control interfaces, and power feeds for both indoor and outdoor equipment.

**Complete systems protection** can be achieved

using MTL Surge Technologies' range of surge protection devices.

**A 10 year, unconditional product warranty** is offered with the CPAC Series, like all of MTL Surge Technologies' surge protection devices.

# Specification

All figures typical at 77°F (25°C) unless otherwise stated

For product specifications see individual datasheets.

## How to order:

For complete camera protection, specify part number to the right by considering the following:

- ◆ Determine the video feed – BNC for analog and CAT5 for digital cameras (see note)
- ◆ Determine the PTZ control protocol – RS232, RS422, etc.
- ◆ Determine the camera power – 12Vdc, 24Vdc, 120Vac or 220Vac
- ◆ Select AC power protection by determining your risk for lightning and utility surge. Indoor cameras usually have the lowest risk of surge while pole and tower mount cameras have the highest risk. An 18kA protector is adequate for in door camera systems.
- ◆ For mounting at the camera, add water proof box part number ZS24281
- ◆ Internal video protection – installs inside camera housing

**NOTE:** IP cameras that use power over Ethernet require a pin-out and power level in addition to the 10/100Base-T connection. Contact MTL Surge Technologies for exact requirements.

## Housing

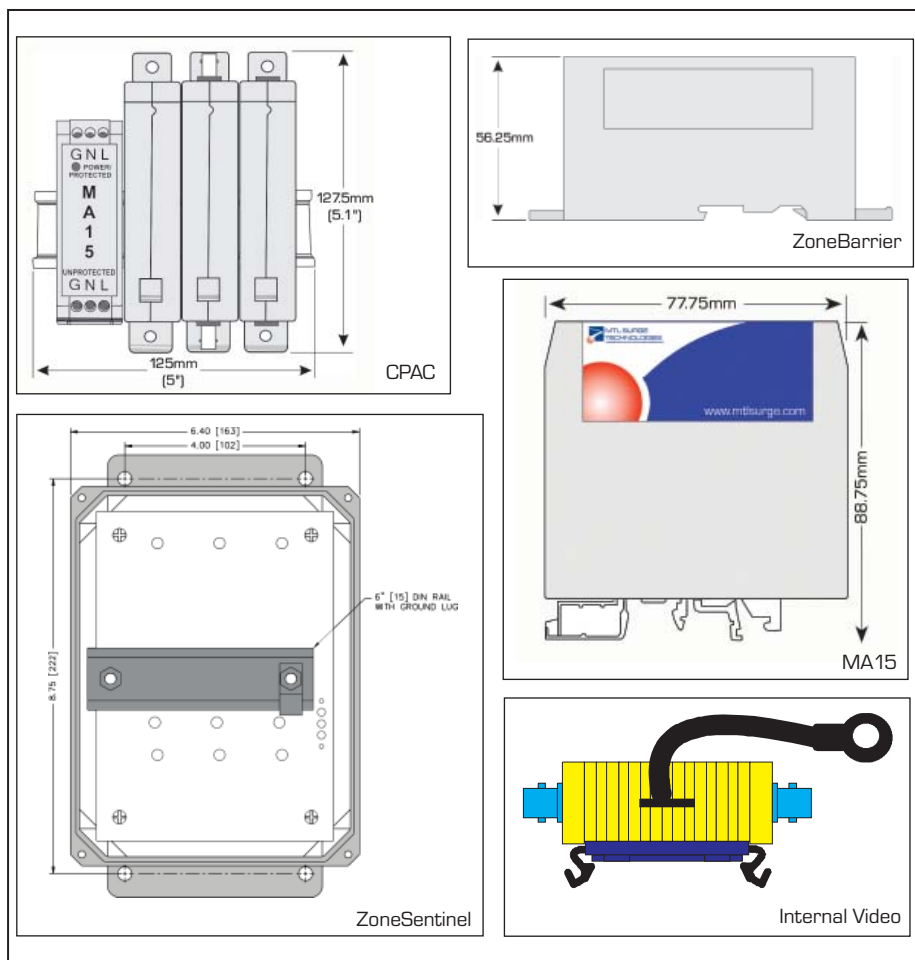
**ZS24281** NEMA 4X waterproof housing with cable glands and DIN Rail.  
8.4" x 6.4" x 5.5"  
(21.35cm x 16.25cm x 13.97cm)

## DIN Rails

**DR21605** 5" DIN rail for up to 4 ZoneBarriers  
**DR21649** 17.5" DIN rail for up to 16 ZoneBarriers  
**DR24500** 19" DIN rail (with mounting brackets) for up to 32 ZoneBarriers

Note: In accordance with our policy of continuous improvement, we reserve the right to change the product's specification without notice.

Part #	Application	Connector	Product	
ZB24521	Video/Controller Out: 50Ω	BNC F/F	External ZoneBarrier	
IP21610	Video 75W	BNC F/F	Internal Video	
ZB24584	Video 75W	BNC F/F	External ZoneBarrier	
IP21609	Video 75W	BNC M/F	Internal Video	
IP21601	Video 50W	BNC F/F	Internal Video	
ZB24510	PTZ	Terminal Strip	RS232	ZoneBarrier
ZB24518	PTZ 2-wire	Terminal Strip	RS485	ZoneBarrier
ZB24587	PTZ 4-wire	Terminal Strip	RS485	ZoneBarrier
ZB24528	PTZ	Terminal Strip	RS422	ZoneBarrier
ZB24530	PTZ	RJ45	RS422	ZoneBarrier
ZB24575	Camera Power	Terminal Strip	12Vdc	ZoneBarrier
ZB24580	Camera Power	Terminal Strip	24Vdc/ac	ZoneBarrier
ZB90957	Camera Power	Terminal Strip	48Vdc	ZoneBarrier
ZB24572	Camera Power	Terminal Strip	120Vac	ZoneBarrier
ZB90790	Camera Power	Terminal Strip	220-240Vac	ZoneBarrier
ZG43005	ZoneGuardian	3 Outlet	120Vac	ZoneGuardian
MA15/D/1/SI	Controller Power	18kA Indoor	120Vac	MA15
MA15/D/2/SI	Controller Power	18kA Indoor	220-240Vac	MA15
ZB24558	Controller Out	RJ48C	T-1	ZoneBarrier
ZB24540	Controller Out	RJ45 CAT5	LAN	ZoneBarrier
ZB24567	Power Over Ethernet	RJ45 CAT5	CAT 5/48Vdc	ZoneBarrier
ZS24281	Camera Protection	Cable Glands	Pole Top Enclosure	



For more information please contact your local MTL sales office:

**The Americas:** +1 800 835 7075  
**UK:** +44 (0)1582 723633  
**Singapore:** +65 6 487 7887  
**The Netherlands:** +31 (0)481 450250  
**Italy:** +39 (0)2 6180 2011  
**Australia:** +61 (0)8 9455 2994  
**India:** +91 (0)44 450 1660

Local sales office information is also available on our web site at:  
[www.mtlsurge.com/support/distribution/index.htm](http://www.mtlsurge.com/support/distribution/index.htm)

